



**Rt Hon Jacinda Ardern**

**Minister for Arts, Culture and Heritage**

**NATIONAL EREBUS MEMORIAL – JUNE 2018 UPDATE NO 2**

<b>Date:</b>	14 June 2018	<b>Priority:</b>	High
<b>Security classification:</b>	In Confidence	<b>Reference:</b>	BR2018/407

<b>Minister</b>	<b>Action Sought</b>	<b>Deadline</b>
<b>Rt Hon Jacinda Ardern</b> Arts, Culture and Heritage	<b>Note</b> the favoured options for the site of the Memorial, as discussed this week between MCH officials and representatives of Auckland Council and the Mayor's Office  <b>Confirm</b> that the options are all consistent with your sense of what is appropriate for the site of the Memorial	18 June 2018

<b>Contacts</b>			
Name	Position	Contact	1 <sup>st</sup> Contact
Philip Griffiths	Acting Group Manager	9 (2) (a)	✓
Sarah Ingram	Principal Adviser	9 (2) (a)	

Minister's office to complete	<input type="checkbox"/> Approved	<input type="checkbox"/> Declined
	<input type="checkbox"/> Noted	<input type="checkbox"/> Needs change
	<input type="checkbox"/> Seen	<input type="checkbox"/> Overtaken by events
	<input type="checkbox"/> See Minister's notes	<input type="checkbox"/> Withdrawn

Comments:

## Purpose

---

- 1 This briefing provides you with an update of the MCH meeting this week with representatives of Auckland Council and the Office of the Mayor, and an outline of the five options that at this stage are provisionally favoured for the site of the National Erebus Memorial.
- 2 We will consult with families about the features of the sites and therefore seek your confirmation that they are all, in principle, acceptable to you. We are not in a position to consult with families about these specific sites, however.

## Recommendations

---

- 3 The Ministry for Culture and Heritage recommends that you:
  - 1 **Confirm** that the five provisionally favoured sites are all acceptable to you, and should be given further consideration; **YES / NO**  
**OR**
  - 2 **Advise** which of the provisionally favoured sites do not seem appropriate to you as the location for the Memorial. **YES / NO**

9(2)(a)



Philip Griffiths  
Acting Group Manager

Rt Hon Jacinda Ardern  
Minister for Arts, Culture and Heritage

\_\_\_\_\_ / \_\_\_\_\_ / 2018

## Options for the Site of the Memorial

---

### Meeting with Auckland Representatives

- 4 Ministry officials had a very constructive meeting this week with Ian Maxwell, Director of Community Services at Auckland Council; and Claire Rorke, Political Adviser to Mayor Goff.
- 5 That meeting was followed by a tour of possible sites for the Memorial, as identified by Ian Maxwell. We understand that all the sites would be acceptable to Mayor Goff, subject to regulatory requirements being met (In some cases, these requirements could be significant.)
- 6 Officials were very pleased with the site options put forward by Auckland Council. They clearly demonstrated the city's commitment to partnering with central government to ensure an appropriate and meaningful Memorial.

### The Nature of the Sites

- 7 The Ministry's work in relation to memorial development is informed by three principles of site selection: functionality, context and meaning. The tour of the options identified by Ian Maxwell enabled us to think more specifically about how these would apply in relation to the Auckland location for the Erebus Memorial.
- 8 We looked at ten or so sites, including locations in Western Springs Park, Teal Park and the wider waterfront. Of those sites, we agreed with Auckland representatives that five seem at this stage to be most worthy of further consideration:
  - Bastion Point
  - Cornwall Park
  - The Domain
  - Parnell Rose Garden
  - Wynyard Quarter
- 9 A map with the sites' location is attached, along with photos of each individual site and a brief and very preliminary analysis against the three principles.
- 10 Several of the locations suggested by Auckland Council are likely to be extremely well received by the Erebus families, based on our earlier communications with them.
- 11 The waterfront site is the wild card in this mix – it would not offer the secluded place of reflection that some families would favour, but would ensure very large numbers of visitors, increasing public understanding of the accident and its impact on families and the country. From a national perspective, that would be very desirable; though we note the further complication that final completion by May 2020 would be highly unlikely, as it would be dependent on the broader waterfront development.

12 We do not at this stage seek your advice as to your preferred site, but rather your confirmation that all of the five should remain on the table. Analysis is at a very preliminary stage, and much remains to be done in determining ownership and decision making authority in relation to each site. Private interests (such as the Cornwall Park Trust Board) are in play in relation to some sites, and we are already aware that the Domain presents particular difficulties in terms of securing approvals. Iwi consultation will be necessary in relation to all sites; Ngati Whatua's position regarding use of Bastion Point, for example, would be pivotal.

### **Consulting with the Families**

13 Our approach now will be to highlight the kinds of features the various sites offer in a consultative email to all the family members. We will not specify the sites themselves, but ask about (for example) the relative merits of offering a reflective opportunity as compared with locating the memorial in a place that guarantees high visitor numbers and increased knowledge of the accident. How important is elevation? Proximity to water? A view to the south?

14 The detail of this message will be developed over the next few days.

### **Next Steps**

---

15 The feedback we get from families will inform our further analysis of the options and our advice to you as work progresses. Our working assumption is that the final decision about the site will be made by you, in consultation with Mayor Goff; formalising the governance arrangements will be a focus of upcoming work.

16 We note your advice to us of last week that you are comfortable with announcing the partnership with Auckland, and will work with the Office of the Mayor to advance this. Our conversations with Auckland representatives have thus far focussed on site options rather than arrangements for the partnership, but based on the warm engagement to date, we are confident that the arrangements can be quickly advanced. We will maintain contact with your office about the timing of that announcement, and whether it is feasible over the next few weeks.

### **Appendices**

---

- Appendix 1: Map of all sites
- Appendix 2: Bastion Point
- Appendix 3: Domain
- Appendix 4: Wynyard Quarter
- Appendix 5: Rose Garden
- Appendix 6: Cornwall Park

PROACTIVELY RELEASED

**Bastion Point:**

Functionality - Accessible for deliberate visitors with parking, toilets and a cafe, flexible for large or small gatherings, safe during the day.  
Context - compatible with existing memorial purpose and protected from unsympathetic development in future. Otherwise unencumbered space.  
Meaning - an historic link to the flying-boat service may be positive or negative, consultation will clarify view of Ngati Whatua, good aspect with elevated views out to Rangitoto and to the horizon, sheltered by mature trees.

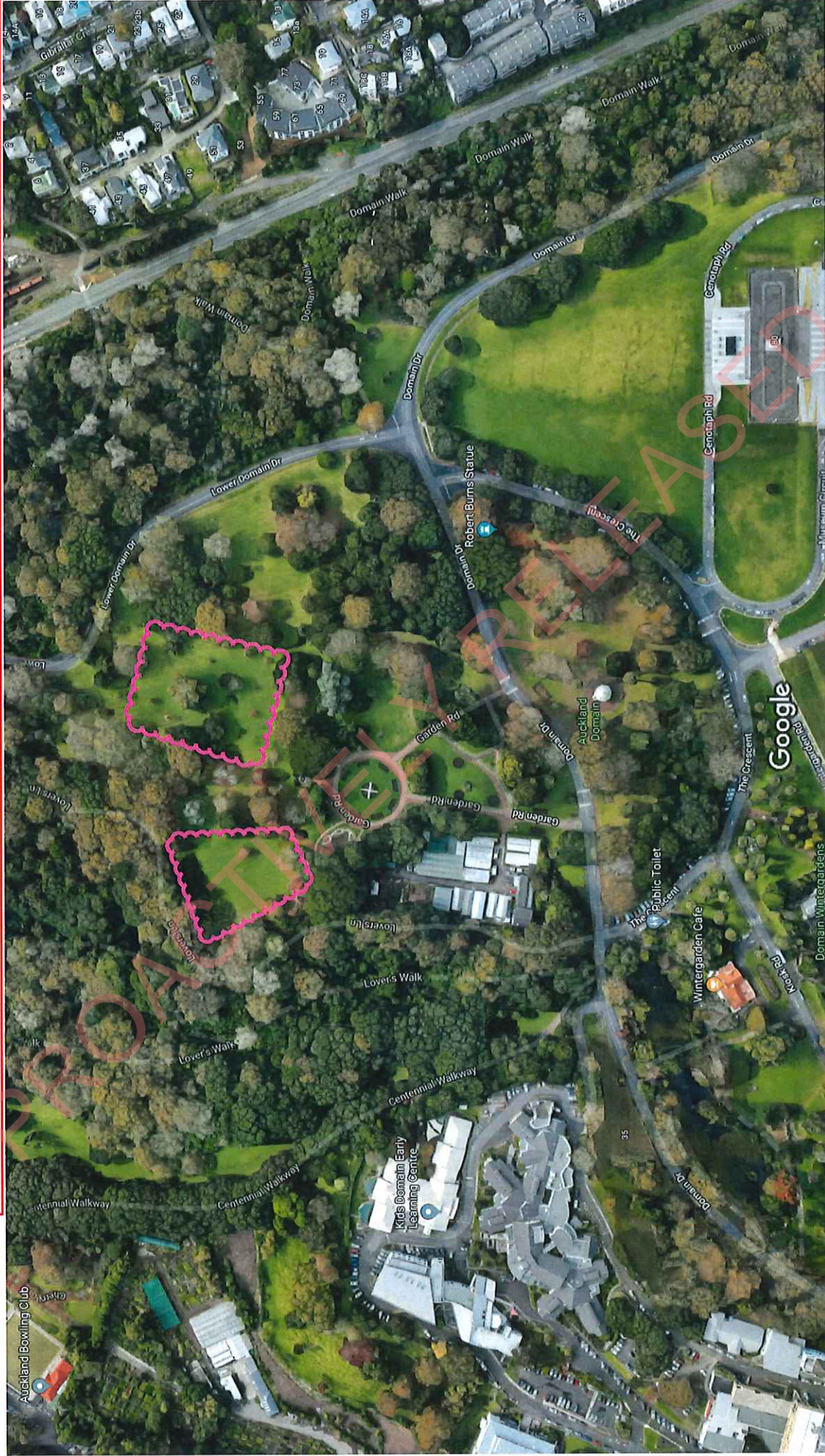


**Domain:**

Functionality - easily accessible but with limited parking and no existing paths, will work for large or small gatherings; safe during the day.

Context - compatible with wider public use of space, security of tenure of site (will not be shifted or built out).

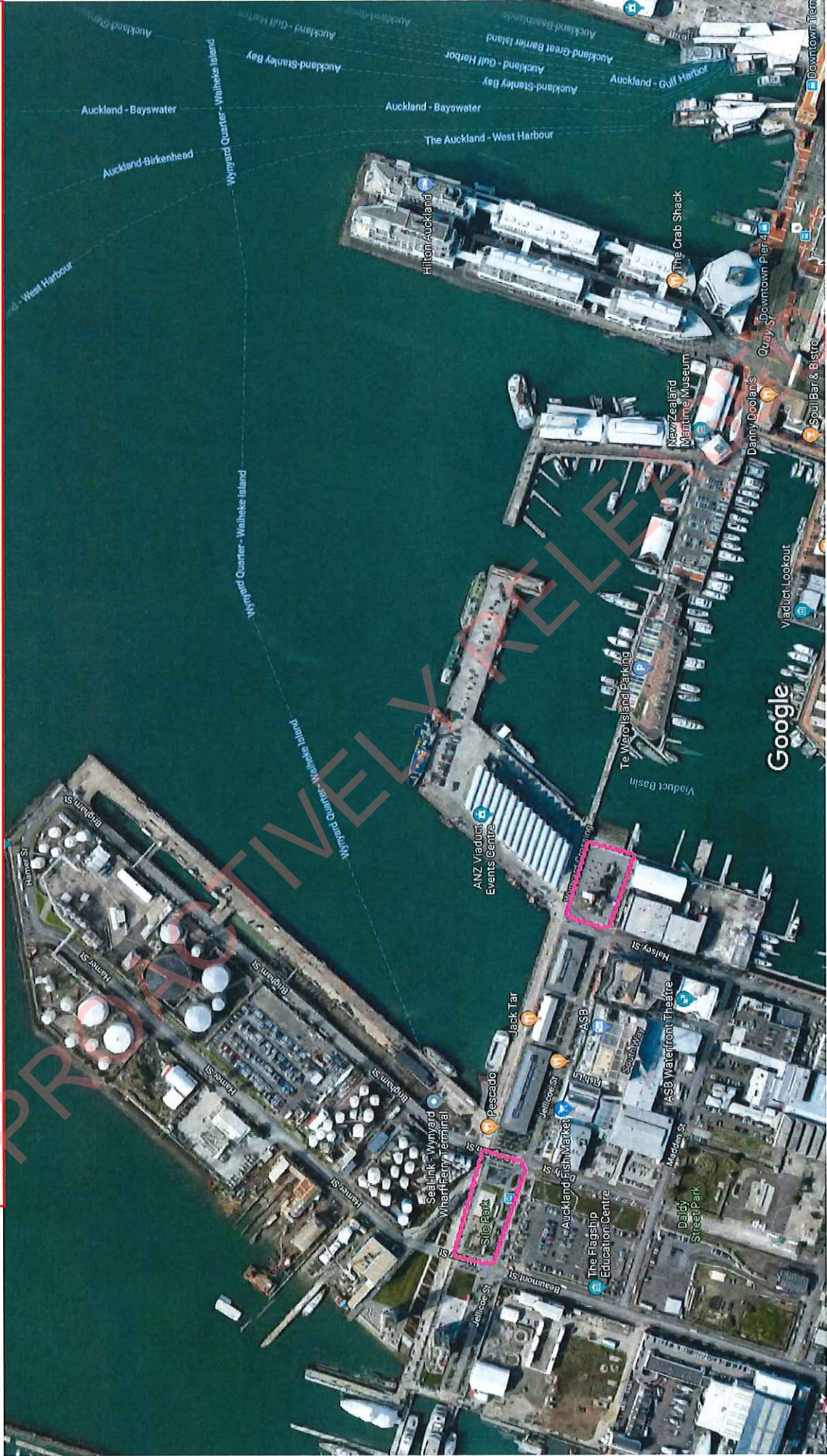
Meaning - not compromised by cultural or social sensitivities, can develop own meaning over time, pleasant setting with existing mature trees.



**Wynyard Quarter:**

Functionality - accessible to a large number of people, inflexible as it will not allow for private experience, safe.  
Context - Co-located with larger gathering spaces,

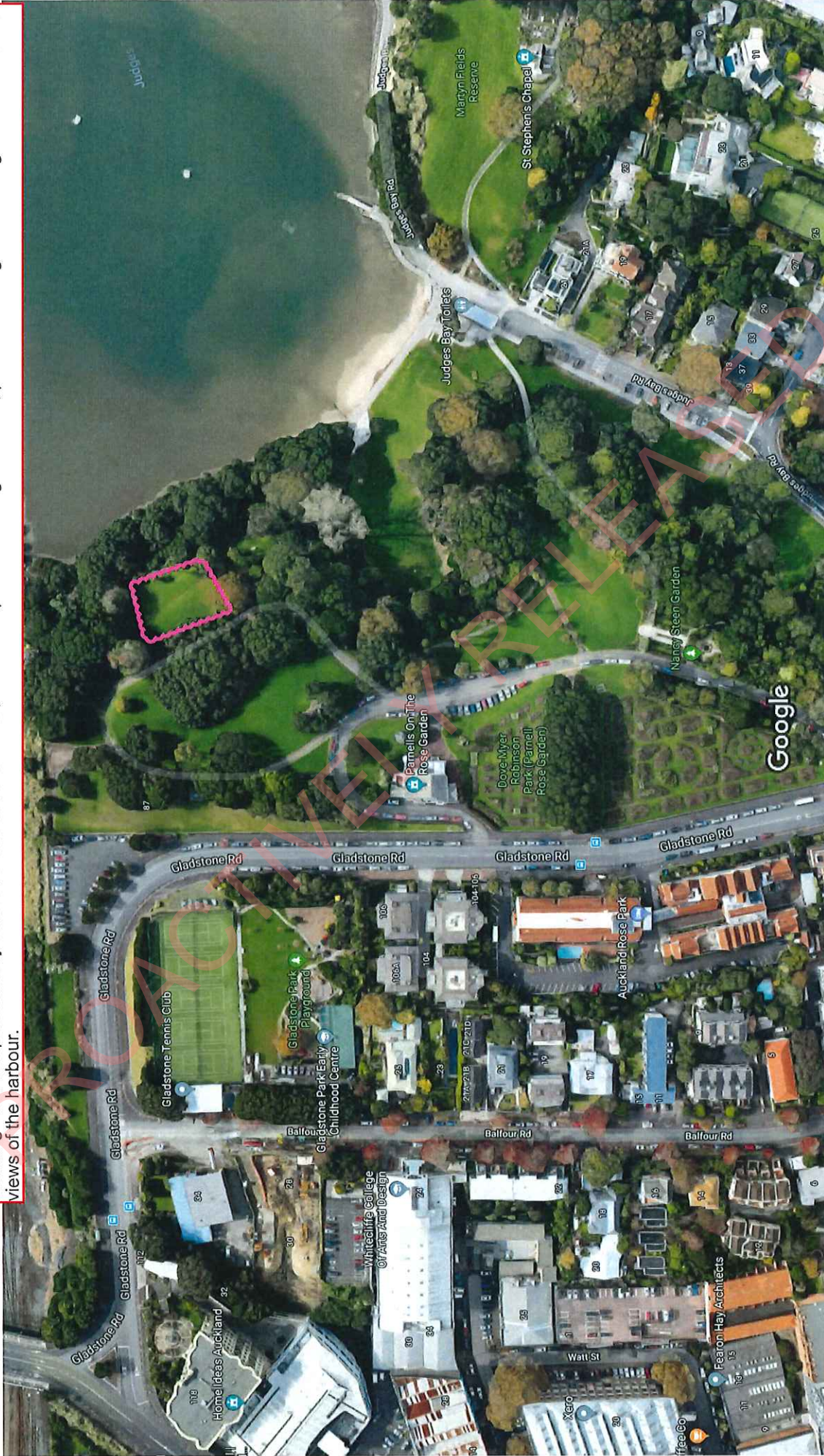
Meaning - not encumbered with existing sensitivities, will influence the meaning of its surrounds, amenity values (trees, views, shelter) will develop over time.





**Rose Garden:**

Functionality - easily accessible with parking, existing paths, nearby toilets and cafe facilities; will work for large or small gatherings; safe during the day.  
Context - compatible with wider public use of space, security of tenure of site (will not be shifted or built out).  
Meaning - not compromised by cultural or social sensitivities, can develop own meaning over time, pleasant setting with existing mature trees and views of the harbour.



### Cornwall Park:

Functionality - easily accessible with parking, toilets and cafe facilities, safe during the day.

Context - can utilise surrounding area if needed, compatible with wider public use of space, security of tenure of site (will not be shifted or built out).

Meaning - not compromised by cultural or social sensitivities, can develop own meaning over time, is a pleasant setting with existing mature trees.

