

Way Point

On a white field
a dark feather
soon effaced by snow

Memory and after-image
reflecting to infinity
the ones who wait,
who seek and grieve,

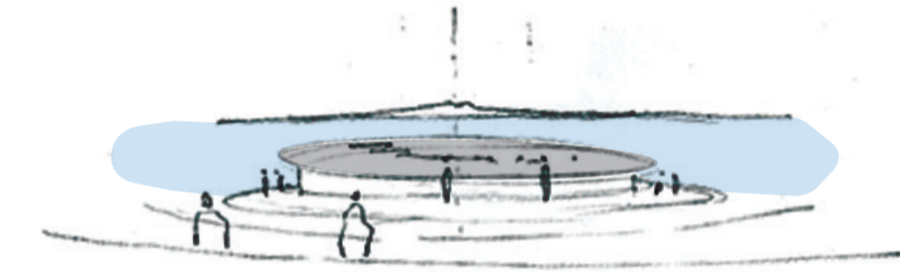
The lost without return,
the all together gone.

COMPASS ROSE FLIGHT PATH
way points of sorrow.

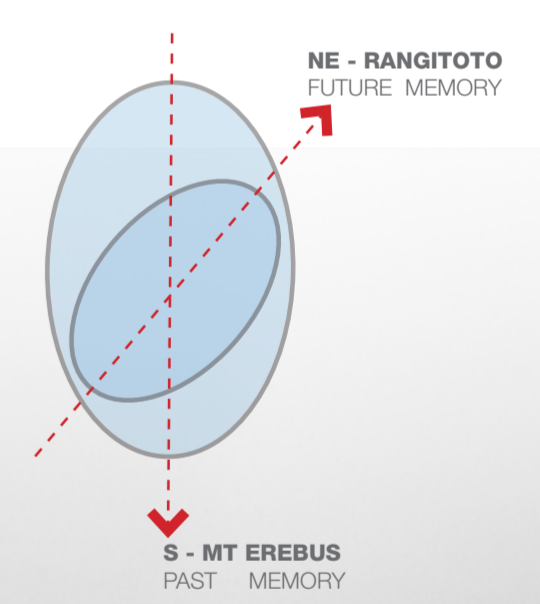
In deep time
the mountain adamant:
It is as it is. Erebus,
lodestone of 257 hearts.



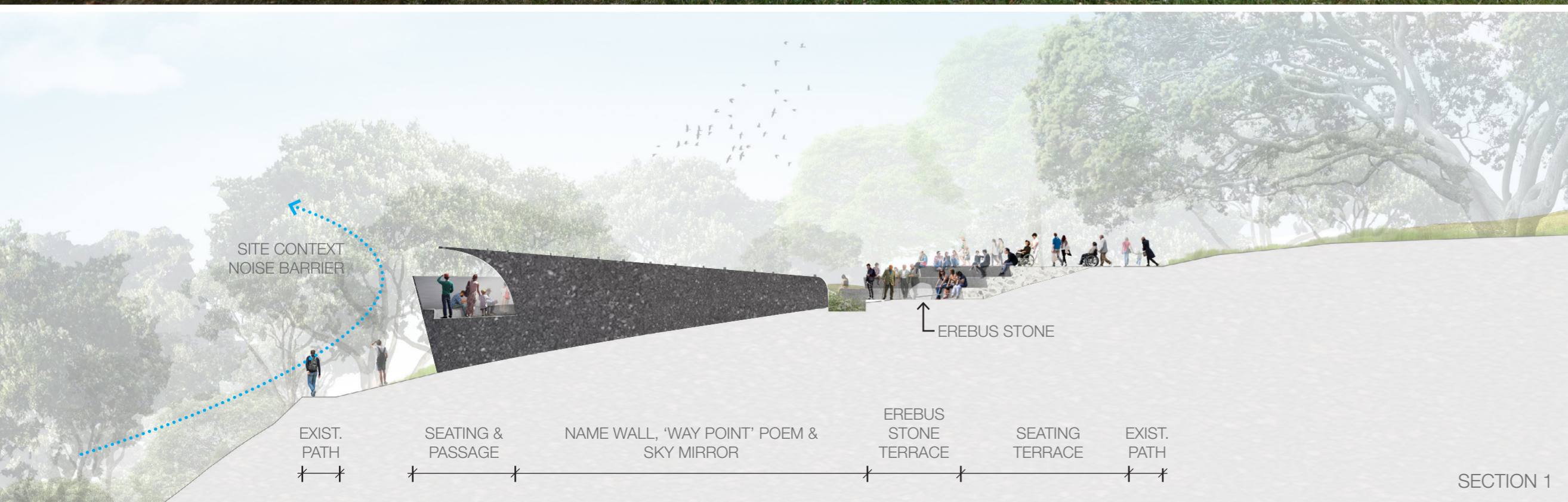
PROJECT VISION
In a verdant harbour-side park, overlooking Tauraru (Judges Bay) to Maungauika (North Head) and Rangitoto, a new geological formation emerges from the gently sloping field – a metamorphic bedrock of memory, commemoration and knowledge – New Zealand's National Erebus Memorial.
Rising from the carved and eroded ground plane, two geological entities (2 ellipses) sit in balance. Way Point and The Erebus Terrace. One evokes the enormity of the Erebus Disaster, an event that buoyantly began with a promise of adventure but ended with incalculable loss and deep sorrow. The other, excavated from the ground on which the disaster happened, a tangible fragment of place, a conduit and notional link to a time and a place that few have or will ever visit.
Way Point, in words evokes a sparse, vast emptiness – an allusion that captures both a sense of Antarctic geography and emotional desolation. Its sky-reflecting monolithic form, a physical expression of the disaster's weighty impact, focuses the view outward and upward to distant harbour views and the vast expanse of sky above. Presenting an opportunity for the mind to expand into the void – to contemplate the disasters many facets. Also looking to infinity, blending with the natural surrounding beauty, it offers a suggestion looking forward into the future with an uplifting forward focus.
At a more intimate scale, the Erebus Terrace, an elliptical ground plane proposed to be excavated from the memorial site, represents a physical connection to the site of the disaster. Orientated on the axis south toward Mt Erebus, it presents a place that reflects upon the location of the disaster and all the lives lost. Its surface is cut into the ground and wrapped in cloaking wall that shields from the noise of the city and nurtures an environment of quite contemplation. A stone from Mt Erebus is placed upon the ley line to Antarctica allowing a physical object from the crash site to occupy the ground plane as a touchstone at the foot of the poem.



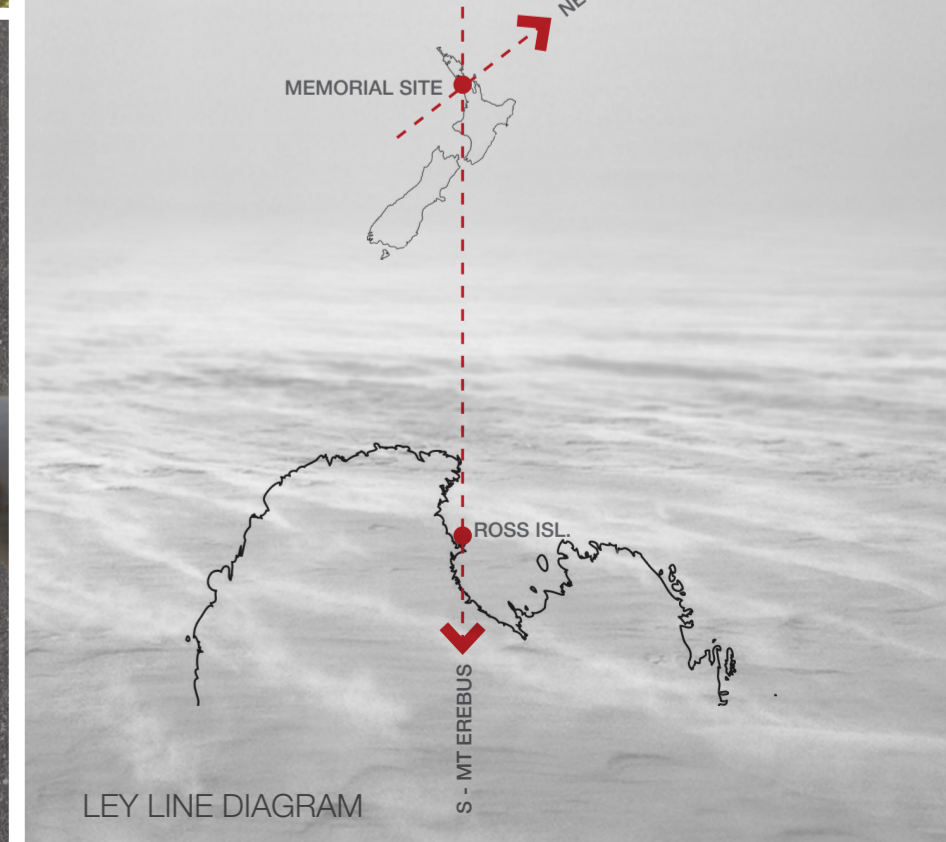
CONCEPT SKETCH



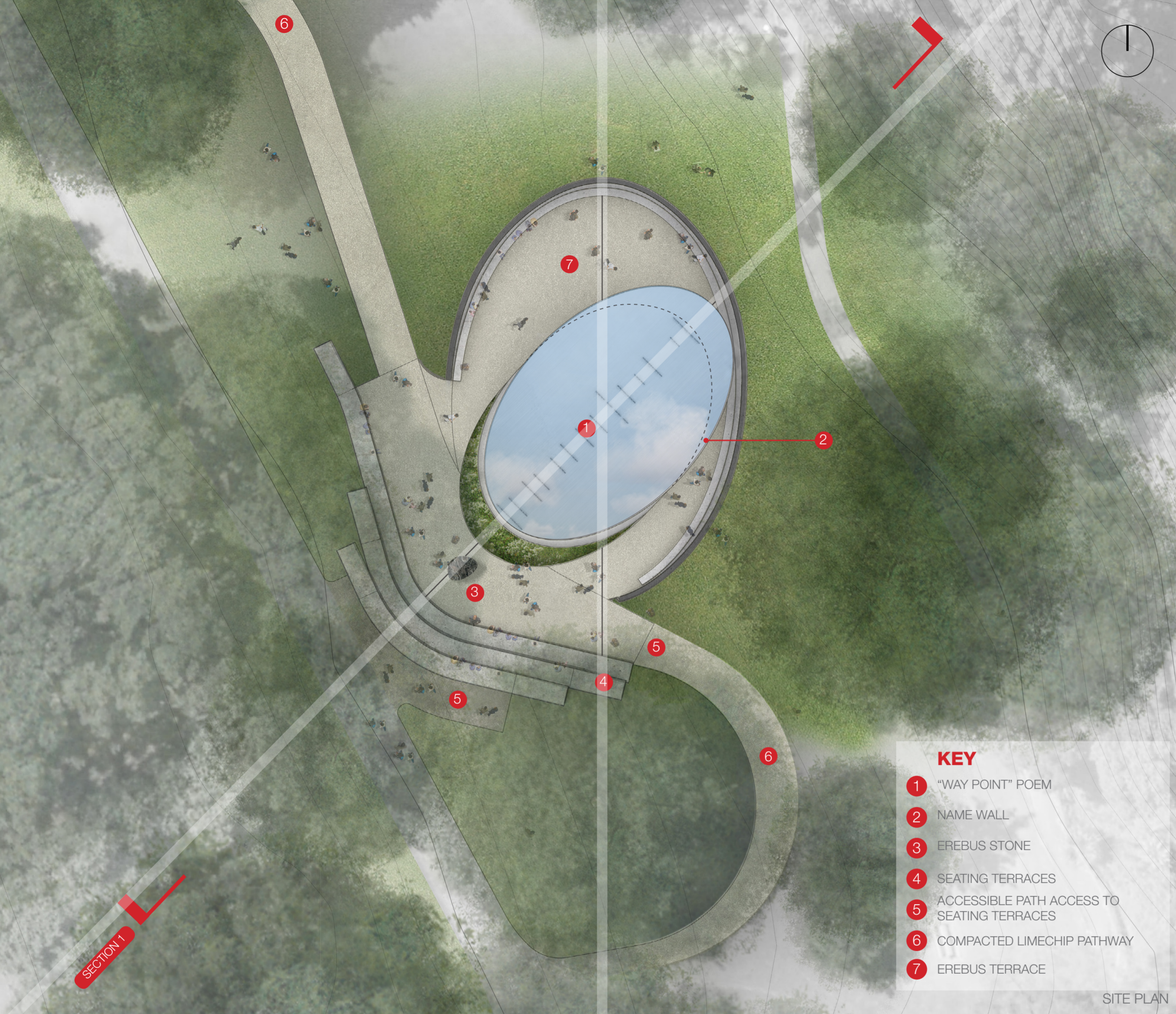
CONCEPT DIAGRAM



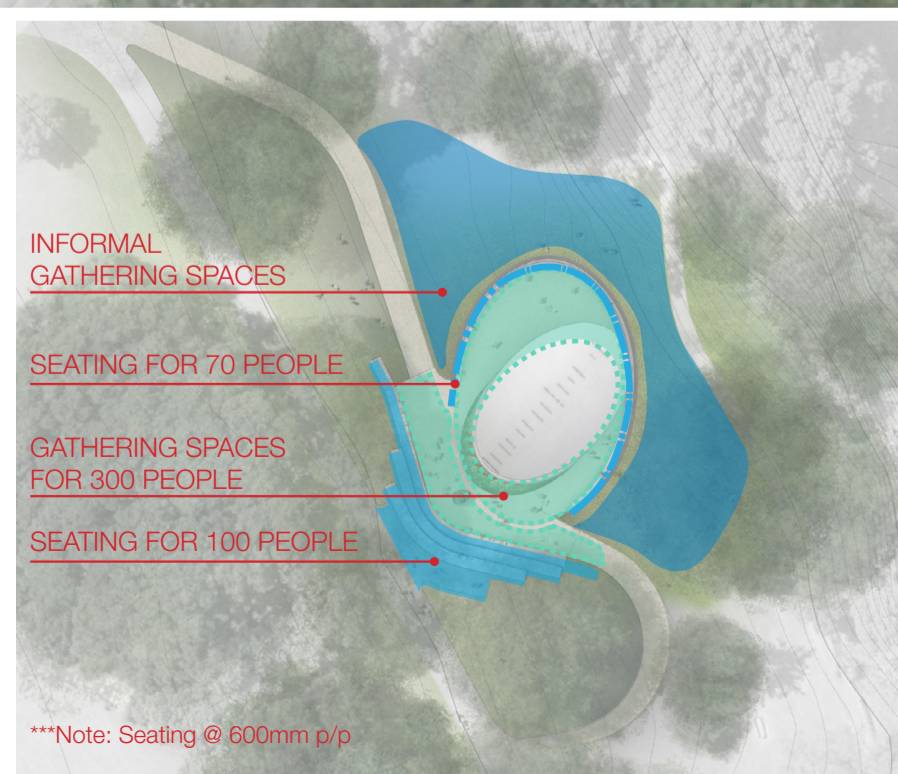
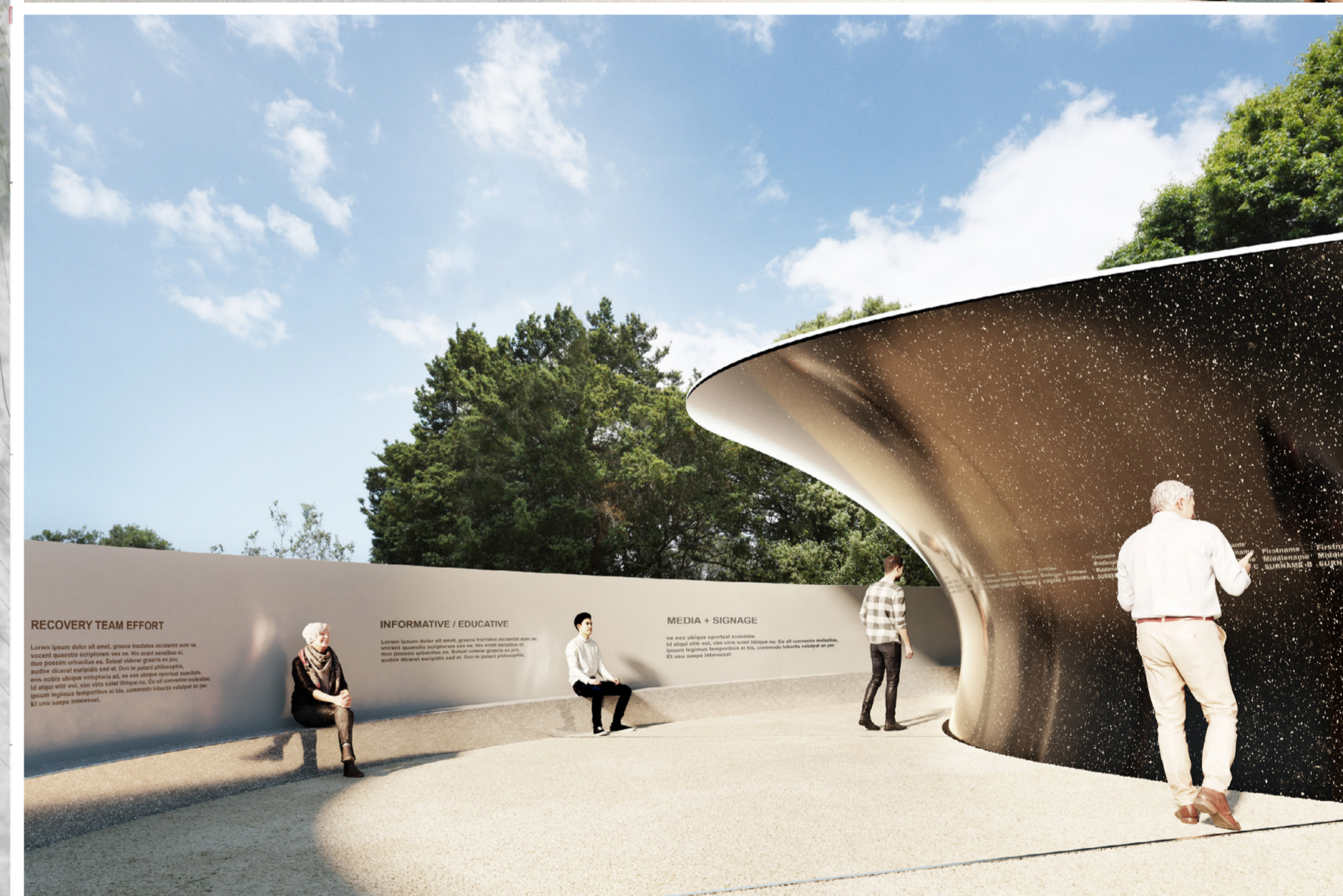
SECTION 1



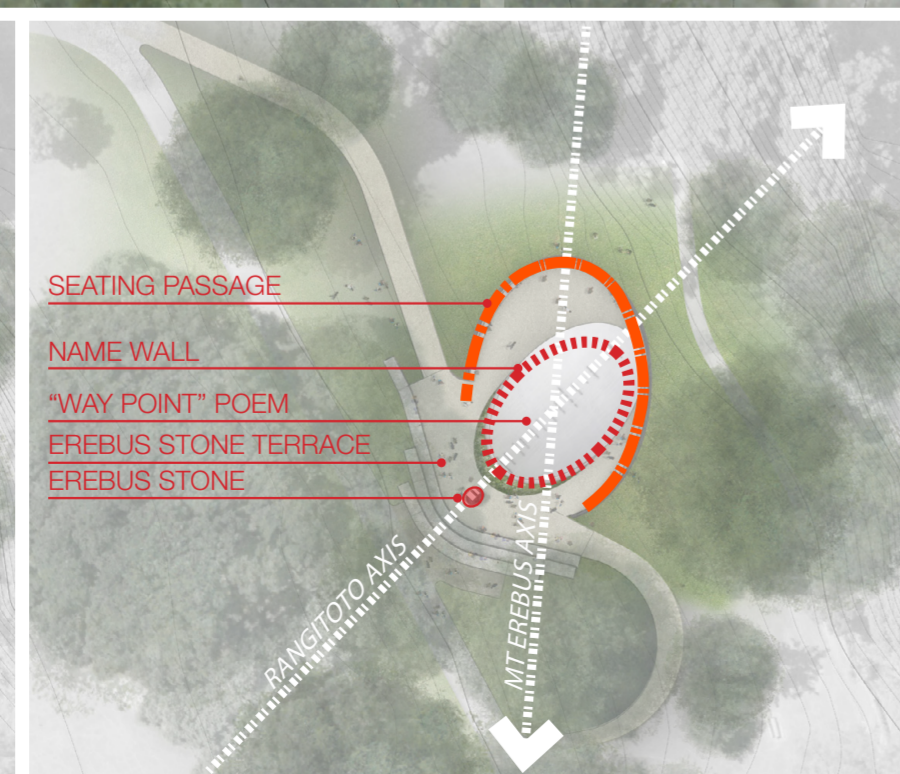
LEY LINE DIAGRAM



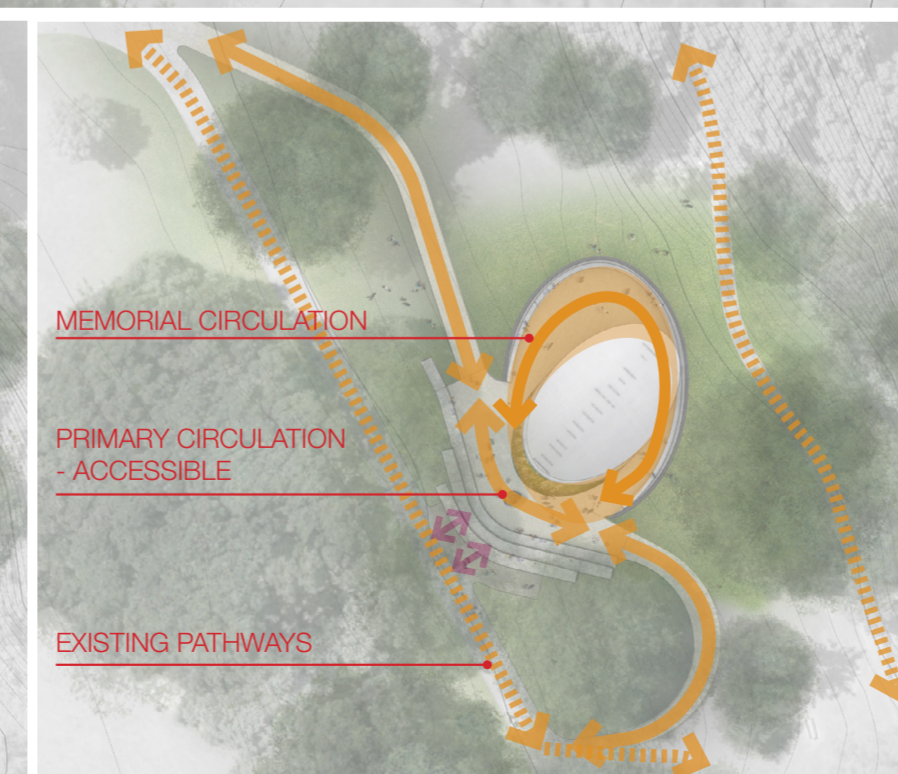
- KEY**
- 1 "WAY POINT" POEM
 - 2 NAME WALL
 - 3 EREBUS STONE
 - 4 SEATING TERRACES
 - 5 ACCESSIBLE PATH ACCESS TO SEATING TERRACES
 - 6 COMPACTED LIMECHIP PATHWAY
 - 7 EREBUS TERRACE
- SITE PLAN



OCCUPATION & CAPACITY



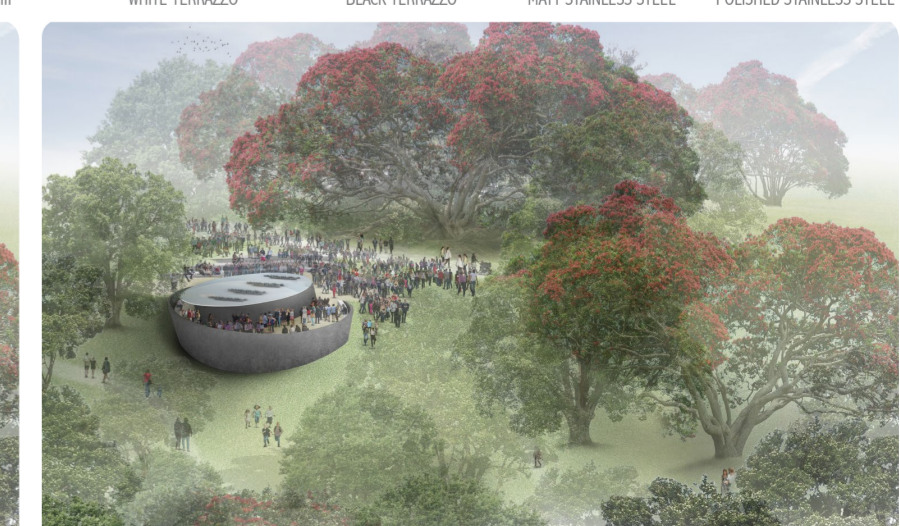
SPATIAL EXPERIENCE & ORIENTATION



CIRCULATION



EVERYDAY USE



LARGE SCALE GATHERING